

Talbot Hotel Stillorgan

Access Welcome Guide

Last updated: 13-03-2026

A Warm Welcome

Welcome to Talbot Hotel Stillorgan.

At Talbot Hotel Stillorgan we are committed to ensuring that all guests and visitors have a comfortable and enjoyable experience. We aim to provide a welcoming environment for everyone, including guests with disabilities, mobility requirements, sensory needs, and families with young children.

This Access Welcome Guide provides detailed information about the accessibility features available throughout the hotel. Our goal is to help you plan your visit with confidence.

If you have any questions about accessibility or specific requirements that are not covered in this guide, please contact us and our team will be delighted to assist you.

Contact Details

Talbot Hotel Stillorgan
Stillorgan Road
Dublin, Ireland , A94 V6K5

Phone: +353 (0)1 200 1800
Email: info@talbothotelstillorgan.com
Website: www.talbothotelstillorgan.com

Getting Here

By Car
Talbot Hotel Stillorgan is located on the Stillorgan Road (N11) approximately 6 km from Dublin City Centre.

Eircode: A94 V6K5

The hotel has an outdoor car park with accessible parking spaces available.



Accessible Parking

- Accessible parking spaces available
- 12 designated accessible spaces
- Step-free route from accessible parking to the entrance

Please note:

Accessible parking spaces are not currently clearly signposted.

By Public Transport

Bus

Several Dublin Bus routes serve the Stillorgan Road area. The nearest bus stops are located right outside the hotel.

Taxi

Local taxi services are readily available and the hotel reception team will be happy to assist with bookings.

Arrival at the Hotel



Main Entrance

- Main entrance is clearly signposted
- Main entrance door type: revolving door
- Door width: 135 cm

Accessible Entrance

An alternative accessible entrance is available.



Features include:

- Manual door
- Door width: 85 cm
- Lever handle door

Please note:

- This entrance is not currently signposted
- It may require assistance to open for guests with limited strength.

Our reception team will always be happy to assist guests on arrival.

Reception Area



Reception staff are trained to assist guests with accessibility needs.

Features include:

- Seating available in the reception area
- Adequate lighting
- Directional signage to key facilities
- Card payment machines that can be used from a seated position

Please note:

- The reception counter does not currently have a lowered section
- A hearing loop is not currently available

Assistance Dogs

Guide dogs and assistance dogs are welcome throughout the hotel.

- Water bowls are available
- Staff are happy to assist where required

Access Around the Hotel

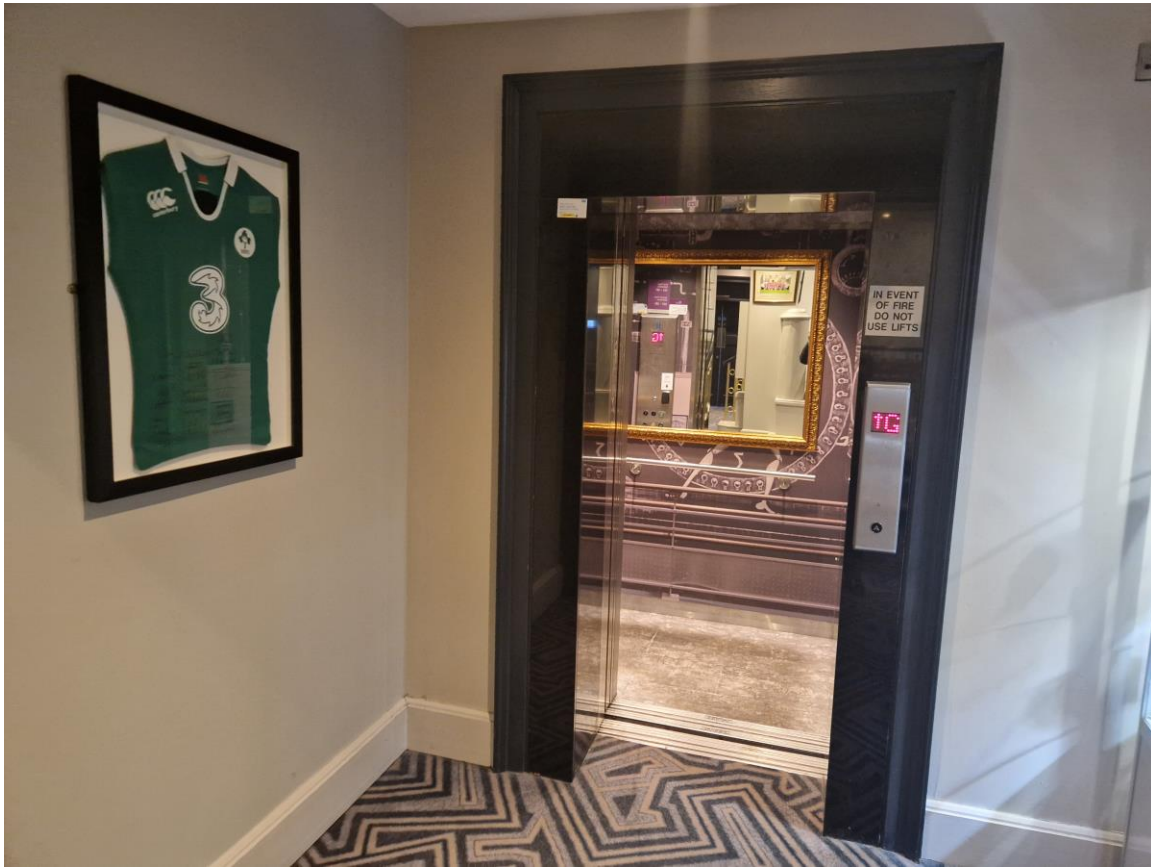
The hotel has lifts providing access to upper floors.

Lift Features

- Passenger lift available
- Lift door width: 80 cm
- Lift interior size: 140 cm width x 110 cm depth

Lift features include:

- Braille buttons
- Visual floor indicators
- Voice announcements
- Accessible call buttons



Corridors & Circulation



- Corridors provide 120 cm minimum circulation space
- Lighting is consistent throughout corridors

Please note:

- Some corridors may contain obstacles or changes in floor level
- Ramps are not available in all areas where small steps occur

Accessible Toilets





A wheelchair accessible toilet is available in the public areas of the hotel.

Features include:

- Grab rails beside the toilet
- Emergency alarm cord
- Lever tap handles
- Sink height: 80 cm
- Mirror usable from a seated position
- Soap dispensers reachable from seated position
- Toilet seat height: 50 cm

Additional features:

- Baby changing facilities available
- Adequate lighting

Please note:

- Flooring is not currently slip-resistant
- Signage does not currently include Braille

Restaurant & Dining



The restaurant is accessible via a step-free route.

Dining accessibility features include:

- Tables and chairs that can be moved
- Some tables with 70 cm clearance underneath
- Aisle space of approximately 110 cm between tables
- Table service available

Menus include allergen information.

Please note:

Large print or Braille menus are not currently available.

Bar & Lounge



The bar area is accessible.

Features include:

- Movable seating in some areas
- Clear circulation routes

Please note:

There is no hearing induction loop at the bar counter.

Meeting & Event Spaces



Meeting rooms are available and accessible.

Features include:

- Wheelchair accessible entrance
- Clear door width of approximately 125 cm
- Movable furniture for flexible layouts

Please note:

Induction loops are not currently available.

Fitness Facilities



The hotel gym is accessible.

Features include:

- Step-free access
- Clear circulation space between equipment
- Some equipment suitable for wheelchair users.

Outdoor Areas



The hotel has an outdoor courtyard / terrace area.

Features include:

- Tables and chairs available
- Some movable furniture
- Some tables with wheelchair clearance underneath.

Access routes to the building include:

- Directional signage to the entrance
- Firm and stable pathway surfaces.

Please note:

- Exterior pathway lighting is limited
- Some pathways include steps or obstacles.

General Facilities

Assistance Animals

Guide and assistance dogs are welcome throughout the hotel.

Baby Changing

Baby changing facilities are available.

Vending Machines

Vending machines are available within the building.

Please note:

Controls may not be fully accessible from a seated position.

Sensory Information

The hotel environment may include:

What you may see

- Hotel reception and lobby area
- Guests checking in and out
- Restaurant and bar activity

What you may hear

- Conversations
- Background music in some areas
- Kitchen activity during busy periods

What you may smell

- Food from restaurant areas
- Cleaning products used throughout the hotel

If you require a quieter area during your visit, please speak to a member of staff who will be happy to assist.

Emergency & Medical Information

In case of emergency:

Emergency Services: 112 / 999

Nearby services include:

- Local Hospital
- Pharmacy
- GP Surgery

Reception staff are available 24 hours a day to assist guests.

Feedback

We are always looking for ways to improve our accessibility and guest experience.

If you have suggestions or feedback about accessibility at Talbot Hotel Stillorgan, please contact us.

Email: info@talbothotelstillorgan.com

Document Information

This Access Welcome Guide was created to provide helpful accessibility information for visitors.

Produced on: 13-03-2026

Last updated: 13-03-2026